



## Personalized Learning Reviews

### Insights Matter

#### What Makes Learning Personalized?

Some of the standard, fundamental components of Personalized Learning are:

- The school’s culture, resources, systems, and structures support student-centered learning
- The curriculum “meets students where they are” and gives them “what they need” to maximize learning
- There any many ways (pace and path) for students to get to the end goal
- Technology tracks student progress
- Students learn from something/ someone other than the teacher
- Learning is mastery-based, and students have multiple chances to show mastery

#### Why Review Your School’s Program?

SchoolWorks Personalized Learning Reviews help schools plan for and assess their adoption of PL strategies. Schools use Personalized Learning Reviews to:

- **Explore PL:** Considering adopting some or all aspects of PL? Use the review to introduce the pillars of PL to your planning team or your faculty.
- **Assess Progress Towards PL Vision and Goals:** Already implementing PL? Use the review to determine if your goals have been met and to identify priorities for ongoing efforts.

#### Contact Us.

**JENNIFER STROCK**

[Jstrock@schoolworks.org](mailto:Jstrock@schoolworks.org)

978-921-1674

#### OUR PL EXPERTS

**Ledyard McFadden**  
FOUNDER/  
MANAGING  
PARTNER

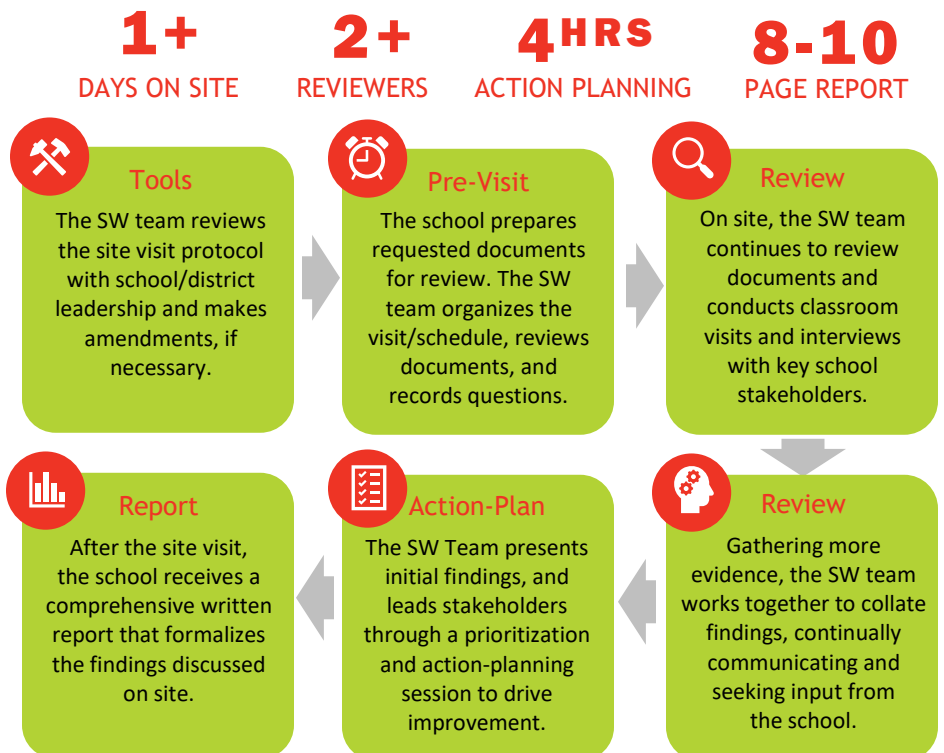


**Jake Schmitz**  
SENIOR  
PROJECT  
MANAGER



SchoolWorks is distinguished by authoritative expertise in personalized learning (PL) program assessment. Company Founder, Ledyard McFadden, developed a PL site visit protocol and facilitated school site visits on behalf of The Bill and Melinda Gates Foundation. Director of Personalized Learning and has overseen the implementation of PL instructional models at the school level. Senior Project Manager, Jake Schmitz, helped develop SchoolWorks’ specialized rubric for PL program assessment, and facilitated PL reviews on behalf of Dallas Independent School District, Denver Public Schools and Massachusetts Department of Elementary and Secondary Education.

#### OUR PL REVIEW PROCESS



## Don't know where to begin? Start with Pre-PL.

Moving a traditional school to a Personalized Learning model is tough work. Often, some essential pre-work must be completed before proper implementation can fully begin. To help your school or district navigate this process, SchoolWorks provides Pre-PL supports to help you:

- Establish expectations for Personalized Learning
- Review and research models to determine your PL plan
- Facilitate communications with key stakeholders
- Create/institute teacher professional development
- Develop a process/framework for monitoring success

We'll review your needs to determine how our team can help.

## SchoolWorks Expertise

SchoolWorks has reviewed and documented the work of thousands of schools and districts since the company's inception in 1998, developing and refining a set of research-based criteria (*SchoolWorks Quality Criteria*) and an evidence-based classroom observation tool (*SchoolWorks Classroom Visit Tool*) that serve as the framework for this work. All SchoolWorks reviews are:

- **Based on Evidence:** We use research-based processes to generate *transparent* and *objective* insights into performance
- **Staffed by Experts:** Our reviews are staffed exclusively by trained former educators and administrators who know the intricacies and constraints of school environments
- **Fully Collaborative:** From inception to completion, we embrace the uniqueness of every project, and approach all work with flexibility, open-mindedness, and creativity

OUR PL CLIENTS  
& PARTNERS

BILL & MELINDA  
GATES foundation



## What the SchoolWorks PL Review Measures

SchoolWorks Personalized Learning Rubric provides a rating for progressive implementation success (Developing, Applying, or Mastering) across multiple indicators related to common objectives of PL programs. It is easily adaptable to school/district-defined frameworks. The rubric addresses:

### Learner-Centered School Culture

- High Expectations: Belief in Student-Centered Learning
- Shift Towards Learner-Centered Learning
- Equity and Cultural Competency

### Learner-Centered Classroom Culture

- Classroom Culture
- Learner Agency
- Routines for Self-Directed Learning
- Equity and Cultural Competency
- Peer Support

### School Supports for Learners

- Support for Learning
- Relationships with Learners
- Social-Emotional Learning and Habits of Success
- Goal Setting

### Structures and Systems to Support PL

- Mastery-Based/Standards-Aligned Progression
- Mastery-Based Credit Recovery
- Grading Systems
- Learner Profiles
- Professional Development
- Policies, Systems and Structures
- Technology Resources

### Learner-Centered Curriculum and Instruction

- Standards Alignment and Mastery-Based Progression
- Planning and Preparing for New Content
- Data-Driven
- Appropriate Challenge and Personalized Instruction: *Meeting Students Where They Are*
- Cognitive Lift
- Discourse, Collaboration, and Interaction
- Demonstration of Knowledge/Mastery
- Modes of Learning
- Flexible Learning Environment
- Use of Technology
- Goal Setting
- Monitoring Progress